



**NOMORE YA REFERENSE YA LEFAPHA: WU23173**

**Motsenyakopo:**

Lafarge Mining South Africa Pty Ltd  
1 Manana Road Industrial Site  
Lichtenburg  
2470  
Mogala: 018 633 3011  
Imeile: [uneysa.taljad@lafarge.com](mailto:uneysa.taljad@lafarge.com)

**FOROMO YA IKWADISO LE DITSHWAELO**

29 Moranang 2022

Go yo o maleba

**RE: GO NEELWA FANO KITSISO TUMALANONG LE MOLAWANA WA BOSETŠHABA WA METSI, 1998 (MOLAWANA 36 WA 1998). MOTSENYAKOPO E LENG LAFARGE MINING SOUTH AFRICA (PTY) LTD, O TSENTSE KOPO YA LAESENSE YA TIRISO YA METSI MO MAFELONG A A LAELANG: POLASI YA DRIEFONTEIN 46 KAROLWANA 0, POLASI YA RONDEFONTEIN 47 KAROLWANA 0 LE POLASI YA RIETSCHRAAL 58 KAROLWANA 0, POROFENSE YA BOKONE BOPHIRIMA.**

***TSHEDIMOSETSO YA LEMORAGO***

Motsenyakopo, e leng Lafarge Mining South Africa (PTY) Ltd ga jaana e samagane le go batlana le Dikopo Tsa Laesense ya Tiriso ya Metsi (WULA) malebana le ditiro tsa yone kwa Kwaring ya Tswana ya yone e e kwa Lichtenburg, mo Polasing ya Driefontein 46 karolwana 0, Polasing ya Rondefontein 47 karolwana 0 le mo Polasing ya Rietschraal 58 karolwana 0, Porofense ya Bokone Bophirima.

Lafarge e na le polante e e dirang semente le dikwari di le pedi kwa Porofenseng ya Bokone Bophirima (go bereka kwari e le nosi fela e leng Kwari ya Tswana. Polante eno e gokagantswe le Kwari ke seporo sa terena. Le fa go ntse jalo, ka ntlha ya sekgala se se fa gare ga mafelo a a mabedi ano Polante ya Semente e wela kafa tlase ga lefelo le le farologaneng la molatswana ka gone e bopa karolo ya kopo ka boyone.

Kwari ya Tswana e fitlhelwa mo e ka nnang dikilometara di le 45 kwa bokone bophirima jwa Lichtenburg mme e mo Mmasepaleng wa Selegare wa Ditsobotla le Mmasepala wa Kgaolo wa Ngaka Modiri Molema.

***TLHALOSO YA LEFELO***

Jaaka fa go setse go kailwe, Kwari ya Tswana e fitlhelwa mo e ka nnang dikilometara di le 45 kwa bokone bophirima jwa Lichtenburg mme e mo Mmasepaleng wa Selegare wa Ditsobotla le Mmasepala wa Kgaolo wa Ngaka Modiri Molema. Beng ba mafelo otlhe a a latelang ke Lafarge Industries South Africa (Pty) Ltd.

Lefelo leno le fitlhelwa mo Polasing ya Driefontein 46 karolwana 0, mo Polasing ya Rondefontein 47 karolwana 0 le mo Polasing ya Rietschraal 58 karolwana 0, Porofense ya Bokone Bophirima Bogolo jwa Kwari ya Tswana bo ikadile mo diheketareng di le 8513.16 mme di-coordinate tsa teng ke 26° 4'44.90"S25°48'26.82"E.

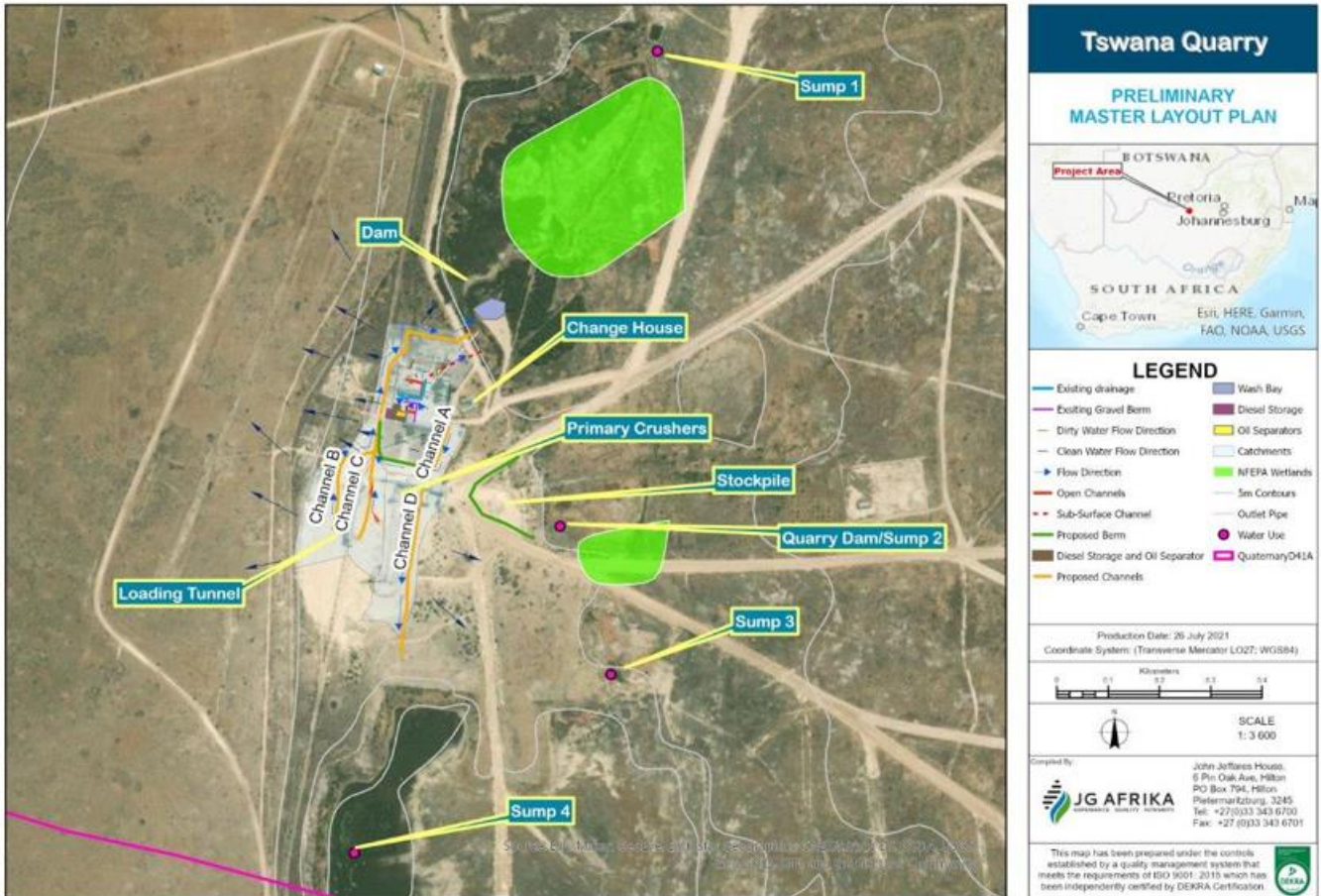
**the goal isn't to live forever, it is to protect a planet that will**

Unit M01, Office No 36, AECI Site, Baker Square, Paardevlei, De Beers Avenue, Somerset West, 7130

Postnet Suite 62, Private Bag x15, Somerset West, 7129

Bakaedi: S Smit; C Weideman | Nomore Ikwadiso: 2012/055565/07 | VAT No. 4040263032

## TOKUMENTE YA TSHEDIMOSETSO YA LEMORAGO



**Setshwantsho 1:** Tebego ya sathalaete ya Lafarge Mining South Africa (Pty) Ltd fa e bapisiwa le tikologo e e amogelang (setshwantsho se bonwe go tswa go Polane ya Konokono ya Boalo ya kwa tshimologong: JG Afrika).

## **TOKUMENTE YA TSHEDIMOSETSO YA LEMORAGO**

### **GO LATELWA GA MOLAO**

Lefelo la moepo la Kwari ya Tswana le dira gore go nne le ditiro tse di latelang tse di thathamisitsweng tumalanong le Molawana wa Bosetšhaba wa Metsi (Molawana 36 wa 1998):

- DW760 Karolo 21 (a) x 1 - Go gelela metsi mo motsweding wa metsi (1 x sediba)
- DW762 Karolo 21 (b) x 1 – Go boloka metsi (Petse ya Kwari)
- DW805 Karolo 21 (j) x 4 – Go Tlosa, Go Ntsha kgotsa go tsholola metsi a a fitlhelwang kafa tlase ga lefatshe fa go tlhokega e le gore tiro e tswelole pele sentle kgotsa e le gore batho ba babalesege. (disampo di le 4 – metsi a a dirisediwang go okobatsa lorole)
- DW766 - Karolo 21(f) x 1 - Go Ntsha metsi a a leswe kgotsa metsi a a nang le leswe mo motsweding wa metsi ka dipeipe, dikanale, kgelelo ya leswe, go ntshediwa ntle ga metsi a a leswe kgotsa ditsela tse dingwe tsa go ntsha metsi. (Go ntshetsa metsi mo teng ga Polfonteinspruit)
- DW763 Karolo 21 (c) x 1 - Go thibela kgotsa go thedimosa metsi gore a elelele mo letsheng (Go ntshetsa metsi mo teng ga Polfonteinspruit)
- DW768 Karolo 21 (i) x 1: Go thibela kgotsa go thedimosa metsi gore a elelele mo letsheng (Go ntshetsa metsi mo teng ga Polfonteinspruit)
- DW767 Karolo 21(g) x 2- Go tsholola metsi ka mokgwa o o ka amang motswedi wa metsi ka tsela e e sa siamang; (Go okobatsa lorole & Mogogoro wa Mokowa wa Kalaka)

### **GO TSENELELA GA BATHO BOTLHE**

Tokumente eno ke ya go go itsise kaga tiro e e atlanegisiwang le go bona gore a o na le matshwenyego ape fela kgotsa dilo tse o gananang le tsone go tswa go maloko a a nang le kगतlhego le a a amegang (I&AP's) tse di tlhokang go akanyediwa.

Jaaka leloko le le kगतlhegang le le le amegang o kopiwa ka bonolo go tlatsa foromo ya ditshwaelo le go neelana ka kakgelo/matshwenyego ape fela kgotsa go latlhela la motlapitsong malebana le go tsengwa ga kopo ya tiriso ya metsi.

Tsweetswee ikgolaganye le Murchellin Saal mo dintlheng tsa go ikgolaganya tse di bontshitsweng mo setlhogong sa lekwalo kgotsa go [murchellin.s@greenmined.co.za](mailto:murchellin.s@greenmined.co.za) ka mokgwa ope fela fa e le gore o tla tlhoka tshedimosetso e e oketsegileng, o na le ditlhoko tse dingwe tsa puo, o na le matshwenyego kgotsa ditshwaelo tse di tlhokang go

## **TOKUMENTE YA TSHEDIMOSETSO YA LEMORAGO**

akanyediwa kgotsa fa e le gore o batla go kwadisiwa jaaka leloko le le kgatlhegang le/kgotsa le le amegang. Fa re sa amogele ditshwaelo dipe go tswa go wena ka 12 Phukwi 2022 kgotsa morago ga yone, seo se tla tsewa e le gore ga o ganane le sepe/ga o na ditshwaelo dipe fela malebana le porojeke mme ga o tlhoke ditokumente dipe fela tse dingwe.

### ***DINTLHA TSA GO IKGOLAGANYA***

<b>Leina/Name</b>	
<b>Mokgatlo/Instansie</b>	
<b>Kgatlhego/Belange</b>	
<b>Aterese ya Poso/Pos Adres</b>	
<b>Mogala</b>	
<b>Fekese/Faks</b>	
<b>Imeile/E-pos</b>	

### ***DITSHWAELO/OPMERKINGS***

<b>Ganana / Ga ke Ganane:</b>	
<b>Kopo ya tshedimosetso e e oketsegileng:</b>	
<b>Matswenyego</b>	

**Mosaeno:** \_\_\_\_\_

## TOKUMENTE YA TSHEDIMOSETSO YA LEMORAGO

**A go na le mekgatlo epe e mengwe kgotsa batho ba o akanyang gore ba tshwanetse go lalediwa gore ba tshwaele? Fa go ntse jalo, tsweetswee neelana ka dintlha tsa go ikgolaganya le bone:**

Leina la yo go ka ikgolaganngwang nae:
Mokgatlo (fa go tshwanela):
Aterese:
Mogala:
Fekese
Imeile

Makolopetso a gago a botlhokwa thata mme a tla sekasekwa ka tsela e e matshwanedi.

Weno Wetsho



.....  
Murchellin Saal

Greenmined Environmental (Pty) Ltd